

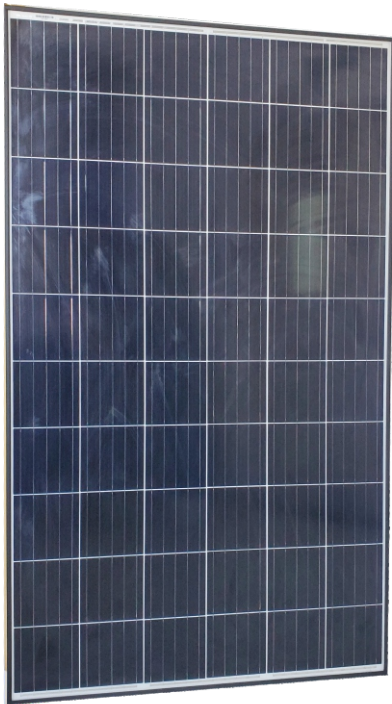
# Monocrystalline Module

## JS330M

**330W**  
power output

**0~+5W**  
Positive power tolerance

**20.3%**  
Efficiency



### High power up to slow

- Large area cells based on 158mm silicon cell technology
- Up to 20.3% module efficiency with high density interconnect technology
- Multi-busbar technology for better light trapping effect, lower series resistance and improved current collection



### High customer value

- Lower guaranteed first year and annual degradation
- Designed for compatibility with existing mainstream system components
- Higher return on Investment



### PID Resistant

- Minimized micro-cracks with innovative non-destructive cutting technology
- Ensured PID resistance through cell process and module material control

**25**

### 25-year power warranty

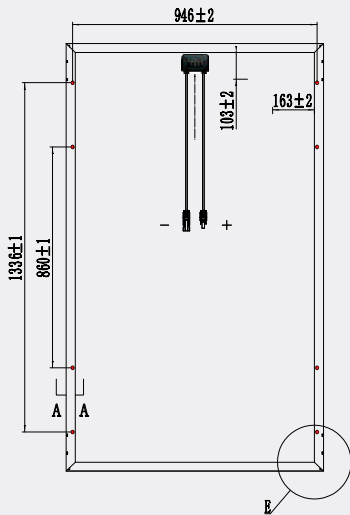
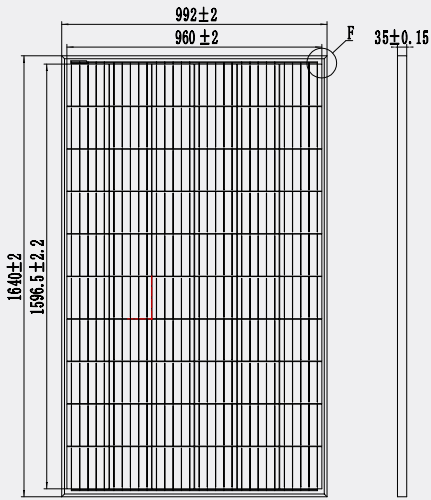
## Comprehensive Products and System Certificates

ISO 9001  
ISO 14001  
ISO 45001  
IEC 61215/IEC 61730  
CGC

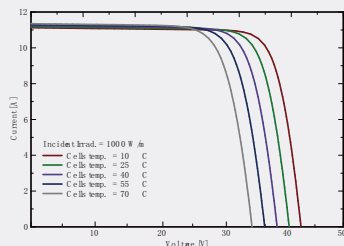
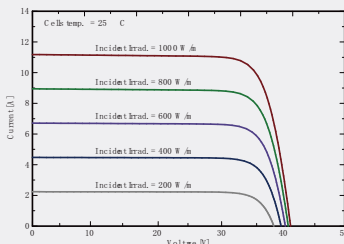
JS Solar's performance Warranty



## Module Size (mm)



## I-V Curve



## ELECTRICAL DATA (STC)

	350	355	360	365	370	375
Peak Power Watts-PMAX (Wp)	350	355	360	365	370	375
Power Tolerance-PMAX (W)	0 ~ +5					
Maximum Power Voltage-VMPP (V)	30.61	30.72	30.85	30.97	31.08	31.15
Maximum Power Current-IMPP (A)	12.74	12.86	12.97	13.08	13.19	13.32
Open Circuit Voltage-VOC (V)	36.54	36.84	37.04	37.24	37.44	37.64
Short Circuit Current-ISC (A)	13.51	13.57	13.63	13.69	13.75	13.81
Module Efficiency η m (%)	18.9%	20.2%	20.5%	20.7%	20.97%	20.3%

STC: Irradiance 1000W/m<sup>2</sup> Cell Temperature 25°C Air Mass AM1.5.  
\*Measuring tolerance: ±3%.

## ELECTRICAL DATA (NOCT)

	235	238	240	242	245
Maximum Power-PMAX (Wp)	235	238	240	242	245
Maximum Power Voltage-VMPP (V)	30.5	30.6	30.7	30.8	30.9
Maximum Power Current-IMPP (A)	7.70	7.78	7.82	7.86	7.93
Open Circuit Voltage-VOC (V)	37.25	37.35	37.45	37.55	37.65
Short Circuit Current-ISC (A)	7.95	8	8.1	8.17	8.25

NOCT: Irradiance 800W/m<sup>2</sup>, Ambient Temperature 20°C Wind Speed 1m/s

## MECHANICAL DATA

Solar Cells	Monocrystalline
Cell Orientation	60 cells
Module Dimensions	1640x992x35 mm
Weight	18 kg
Glass	3.2 mm, High Transmission, AR Coated Heat Strengthened Glass
Encapsulant Material	EVA
Backsheet	Black
Frame	35 mm Anodized Aluminium Alloy
J-Box	IP 68 rated
Cables	Photovoltaic Technology Cable 4.0mm <sup>2</sup> , Length: 1000mm Portrait: N 350mm/P 350mm

\*Please refer to regional datasheet for specified connector.

## TEMPERATURE RATINGS

NOCT (Nominal Operating Cell Temperature)	43°C (±2°C)
Temperature Coefficient of PMAX	-0.34%/°C
Temperature Coefficient of VOC	-0.25%/°C
Temperature Coefficient of ISC	0.04%/°C

## MAXIMUM RATINGS

Operational Temperature	-40 ~ +85°C
Maximum System Voltage	1500V DC (IEC)
Max Series Fuse Rating	15A

## PACKAGING CONFIGURATION

Modules per box:	31 pieces
Modules per 40' container:	952 pieces